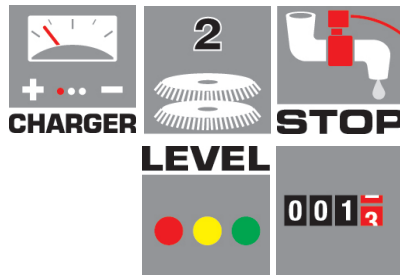




## ComfortXXS 66 BT

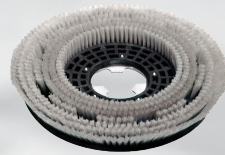


### Standard equipment:

- 00005-02292 - Rear Squeegee
- 00005-02293 - Front Squeegee



10002-08102 - Brush (x2)



• 00056-00048 Battery Charger

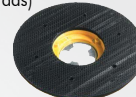


### Optional:

- 10001-09911 - Light Abrasive Pad (Beige)
- 10001-09916 - Medium Abrasive Pad (Green)
- 10001-09921 - Hard Abrasive Pad (Black)



• 10002-07379 EQU Driver Pad (Required for Abrasive Pads)



• 0.077.0017 20lt Maintain

• For new floors



• 0.077.0016 20Lt Scrubsol

\* For older floors



### Equipped with:

- Suitable for deep cleaning of large areas up to 3200m<sup>2</sup>
- Double Counter Rotating Brush with 32kg Constant Pressure
- Great Working Autonomy due to 2 x 12V Batteries and Rear Wheel Drive
- Ergonomic Steering Wheel Design with User Friendly Controls
- Inspection Cover for Fast and Easy Cleaning of Water Tank
- Automatically Stops Brushes and Detergent Outflow when Stationary
- Self-Levelling Brush Plate
- Automatic Detergent Measuring System

| ComfortXXS 66 BT                  |                                  |
|-----------------------------------|----------------------------------|
| Code                              | 37010-00011A                     |
| Power Supply                      | 24v (2 x 12v Batteries Supplied) |
| Scrubbing/Squeegee Width          | 660mm / 855mm                    |
| Detergent / Recover Tank Capacity | 75 litre / 80 litre              |
| Vacuum Motor                      | 2 x 400W                         |
| Traction                          | Rear Wheel Drive                 |
| Dimension/Weight                  | 123x63x121cm/160 Kg              |